



BALLARAT
HERITAGE
FESTIVAL

BALLARAT
TWEED RIDE
EST. 2012



MAY 18, 2024

SATURDAY, 11.00 AM
CATHEDRAL HALL, DAWSON ST SOUTH

PARTICIPANT INFORMATION PACK

WHAT IS A TWEED RIDE?

A Tweed Ride is a bike ride where a group of cyclists dress in historic and vintage attire. The tradition began in London in the 90s with riders dressing in classic British winter attire and riding through the streets of London. Similar events are now held all around the world.

The first Ballarat Tweed Ride was in 2012 and it has since become a key iconic part of the annual Ballarat Heritage Festival.

It is an all-weather event that cycles through Ballarat's historic streets.

At the beginning of the ride, participants register and socialise while being entertained by a fantastic live band. Once everyone has arrived, rosettes are handed out to the best dressed and the best bikes. Those who get rosettes will also be given a gift bag of local treats.

CONTENTS

This booklet has a range of information to help you plan your ride including:

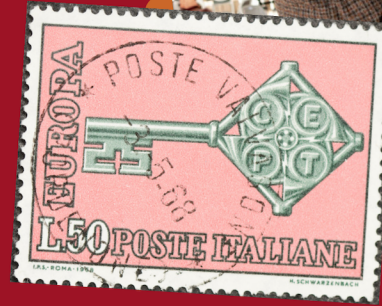
- Event schedule
- Tweed Fair and Dance details
- Safety information and participation guidelines
- Pre-ride entertainment guide
- Fashion award category information
- Style inspiration



TWEED FAIR

CATHEDRAL HALL, DAWSON ST STH
11.00AM – 4.00PM

The ride will start and finish at the cathedral hall which will have tables and chairs and you are more than welcome to bring a packed lunch. There will also be refreshments available including gin, things to eat, milliners, vintage fashion and more. There will also be kids entertainment and a fashion parade.



ENTERTAINMENT AND ACTIVITY SCHEDULE

- 12.40 PM THE MAGIC PUDDING PANTOMIME
- 1.00 PM DANCEFLOOR
- 2.00 PM VINTAGE FASHION PARADE
- 2.40 PM THE MAGIC PUDDING PANTOMIME
- 3.00 PM DANCEFLOOR



RIDE SCHEDULE

11.00

REGISTRATION

Riders and spectators gather at the Cathedral Hall. Riders are registered using the QR code from their purchased ticket or by having their name looked up on the event attendee list on Eventbrite. Once registered they receive a ribbon to pin to their outfit.

Tip: Have your QR code ready for speedy registration

11.40

ACKNOWLEDGEMENT OF COUNTRY

11.45

PRESENTATION OF STYLE AWARDS

For each award category, the best dressed are invited to the front of the hall to show their outfits. Rosettes and prizes are handed out.

12.10

PREPARE TO RIDE

There is a short safety briefing, recapping the information provided to participants by email. The lead rider forms a line to take participants onto the ride route.

12.20

RIDE BEGINS

12.45

PHOTO OF RIDERS AT TOWN HALL

1.00 (ESTIMATED)

RIDE FINISHES

Cathedral Hall, Dawson St South, with the Tweed Fair

We love how many photographers take part in this event every year. If you are hopeful of particular photos of the group, spectators, organisers or fashion award winners before the ride, please support us to keep the ride on schedule by taking all the pre-ride photos you need before 11.10 am. Asking riders for photos after this time may delay the group from starting.





LIVE MUSIC

While participants register and collect their ride ribbon we will be entertained by brilliant live music from The Little Brass Band.

STYLE AWARDS

This year we will be giving all our award rosettes to participants and spectators before the ride begins so that they can wear their rosettes for the whole day. See the awards section for more information on the categories and how to take part. Be present at the hall from 11.00 am to ensure your outfit gets considered for a rosette. Arriving too close to the ride start time may mean you won't be seen before the awards begin.

VINTAGE FASHION PARADE

The fair this year will include a curated fashion parade from local collectors with 20 outfits of different eras.

COMMEMORATIVE PIN

This year will also include a limited edition commemorative pin. Ask about it when you register.

REFRESHMENTS

There are several cafes around the ride start location and there will be some refreshments available at the hall, including treats from Mrs Browne Bakes and gin from local distillery Kilderkin.

PANTOMIME

The ride will finish at St Patrick's Cathedral Hall on Dawson St South. The fair will have a curated dancefloor with mini classes for beginners to join in. There will also be refreshments and interesting stalls to browse.

SPECIALTY STALLS

The Tweed Fair will have vintage fashion stalls, millinery, specialty accessories stalls and more.



PREVIOUS YEARS IN PICTURES



Best dressed awards before the ride start



And they're off! The ride begins



Photo of participants at the 2023 Tweed Fair after the ride.



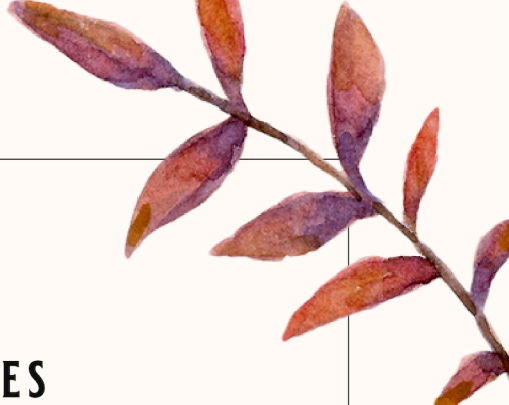
Live music before the ride



Pre-ride socialising and enjoying the day



Bikes of all shapes and sizes take part



SAFETY INFORMATION & PARTICIPATION GUIDELINES

ROAD RULES

Cyclists have the same rights and responsibilities as other road users. We will be obeying all road rules on the day of the ride to ensure the safety of all participants and other road users. Information on the rules that apply to bicycles on roads can be found on the VicRoads website here: <https://www.vicroads.vic.gov.au/safety-and-road-rules/cyclist-safety>

Wearing a helmet is a requirement to comply with road safety laws.

Even though we will be on a separated bike and pedestrian path, it is still important to stay aware of your surroundings and check for indicators on turning vehicles, or pedestrians that may inhibit your path. A bicycle bell or horn can help to make fellow road or path users aware that you are near.

Under the Road Rules, bicycles are considered to be vehicles and riders must obey traffic signals, stop signs and giveaway signs. When we are riding as a group, it can be easy to 'follow the leader' without first checking if it is safe to cross. Please pay attention to all road signals as you ride.

RIDE ROUTE

The ride will progress via the separated bike and pedestrian path. It will travel west along Sturt St using established bike crossings up to Pleasant St. At Pleasant St, riders will loop along the Northern side of the block and will gather to wait for all participants to catch up. The ride will then travel east along Sturt St, travelling back down the same path and crossing all the same intersections and continuing east along Sturt St to the Ballarat Town Hall for a group photo. Riders will then return along the bike path to Dawson St to complete the ride and join in the Tweed Fair.

TRAFFIC AWARENESS

The separated cycling and pedestrian path we will be on interacts with motorised vehicle traffic at intersections. There are traffic light intersections at which riders must press the button for the green light signal. At these lights, the bike green signal will begin shortly before the green light for motorised vehicles, which gives cyclists a small head start. Cars must give way to cyclists at these lights.

At other intersections, there are raised pedestrian and cyclist crossings at which motorised vehicles crossing the path must give way to all cyclists. Be aware of drivers at these intersections to be sure that they have seen you, and give yourself time to stop in if you are not confident that they will follow the road rules and give way. While this will be unlikely, especially given the visibility of our group in numbers, it is important to be aware as the intersections are not closed, so cars may still enter.



CONTINUED NEXT PAGE

SAFETY INFORMATION CONT.

PREPARE YOUR BIKE

There is a chance that the path will be wet, which can be slippery. Checking your bike to make sure that it can safely stop on a wet road and being aware of your environment will help to ensure you do not slip. Check out this guide from Bicycling.com <https://www.bicycling.com/skills-tips/a20023698/how-to-prepare-for-your-first-bike-ride/>

All riders will have the ability to stop and rest along the path if they need to.

WEATHER

This event will happen no matter the weather. If it's too wet or cold for you to be comfortable taking part, then you can stay warm at the cathedral hall on Dawson St South and wait for the other riders to return. Accessories like gloves and scarves help keep the chill off you as you ride.

WHAT BIKES CAN PARTICIPATE?

All bikes are welcome on a Tweed Ride. You don't have to have an old or vintage bike to participate. New bikes of all styles are welcome, as well as old bikes. Make sure your bike is safe to ride, and that you are comfortable riding it on the road before the big day.

For those who do bring a special bike, there are several rosettes awarded:

- **Most Steadfast Steed:** open to riders of all kinds
- **Best e-Bike:** for those on an electric bike
- **Oldest Bike:** for the collectors riding a heritage/vintage bicycle
- **Penny-farthing of the Day:** new or old penny-farthings welcome.
- **Best Non-Bike:** for trikes, unicycles, scooters or others

REGISTRATIONS

Registrations will be open from 11.00 am at the cathedral hall and pre-bookings must be made through Eventbrite. Pre-bookings close 6pm on 17 May.

Participants must have their QR code scanned to register as participating on the day to receive their participation ribbon and have their attendance checked off.

COVID SAFE

It is a requirement that participants follow any required government COVID safe guidelines. ***Please do not attend the event if you are unwell***

PARKING

If you are bringing your bike by car there is plenty of parking around Lyons St, Dawson St and Sturt St that you can use. If you park anywhere along Sturt St you can use the bike path to ride to Dawson St and the cathedral hall.

The ride will progress via the separated bike and pedestrian path. It will travel west along Sturt St using established bike crossings up to Pleasant St. At Pleasant St, riders will loop along the Northern side of the block and will gather to wait for all participants to catch up. The ride will then travel east along Sturt St, travelling back down the same path and crossing all the same intersections and continuing east along Sturt St to the Ballarat Town Hall for a group photo. Riders will then return along the bike path to Dawson St to complete the ride and join in the Tweed Fair.

PLEASANT ST

PATH TURN POINT



STURT ST

STURT ST GARDENS



CATHEDRAL HALL



RIDE START

TOWN HALL

DAWSON ST



3KM
RIDE LENGTH



STYLE & BIKE AWARDS

MOST DAPPER PARTICIPANT

Riders in suits and traditionally masculine attire

MOST ELEGANT PARTICIPANT

Riders in skirts and traditionally feminine attire

GROUP OF DISTINCTION

Those who have coordinated attire as 2 or more.

MOST DAPPER SPECTATOR

Spectators in suits and traditionally masculine attire

MOST ELEGANT SPECTATOR

Spectators in dresses and traditionally feminine attire

TWEEDIEST TOT

Pre-teens who may spectate or ride

STEADFAST STEED

For all rides of all kinds

BEST E-BIKE

For electric rides

BEST NON-BIKE

For trikes, scooters, unicycles and more

PENNY FARTHING OF THE DAY

For the big wheels (+ a small wheel)

MAGNIFICENT MILLINERY


Hats that capture the season and spirit of the event

SPECTACULAR SAFETY GEAR

Helmets the bring style into safety

2023 TWEED STYLE ICON

A sash given to the overall style winner, selected from the winners of all categories



STYLE INSPIRATION

HOW TO DRESS FOR THE EVENT

The fashion of the Ballarat Tweed Ride is as inspired by vintage eras as it is by the weather. It is a combination of style and practicality.

We want you to be comfortable and confident while you feel fabulous. This is the same approach we take for awarding our rosettes as well.

PRACTICALITY

Remember that if you are wearing a long skirt or coat, you may need a wheel or chain guard on the bike to help protect your garments from damage, and to protect you from getting tangled. **Yes, helmets are required.**

We also encourage boots, long socks, gloves and scarves. The ground may be muddy.

Things to remember about Ballarat in autumn:

- The weather is often cold
- Light drizzle is common

Tweed Riders take their outfit inspiration from many places. The traditional Tweed Ride inspiration comes from classic British winter tweed, but you can wear whatever vintage you like. We have prepared a style board on Pinterest to help inspire you:

https://www.pinterest.com.au/goldfields_girl/tweed-ride-style/

For preparing your outfit, here are some suggestions to make your ride comfortable:

- Multiple layers will help you stay warm and/or cool
- Gloves keep the chill of autumn air off fingers
- Closed-toe shoes keep feet warm and dry and prevent tripping on pedals
- A hat can keep you warm, dry and hide helmet hair
- Sunglasses keep the rain out of your eyes and your vision clear



PLANNING YOUR OUTFIT

This section should give you an idea of ways to bring to life a well-rounded outfit. For a Tweed Ride, fabrics play as much of a part as details. Accessories can really take your style to the next level. Here are some ways you can make an amazing outfit.

FABRICS



Velvets



Tartans



Tweeds



Houndstooth



Knits

ACCESSORIES & DETAILS



Gloves



Suspenders



Elbow patches



Ties & Goggles

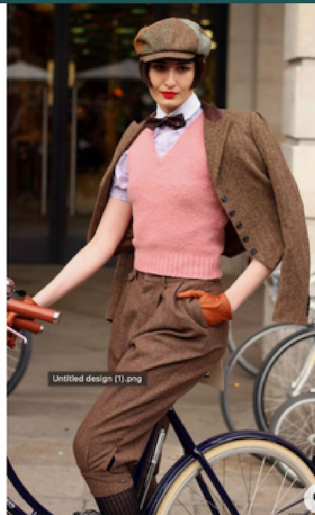


Scarves

HATS



CLOTHING PIECES



Capes

Kilts

Vests

Suits

Dresses & Skirts

FOOTWEAR AND HOSIERY

